

# Son Espanyolet

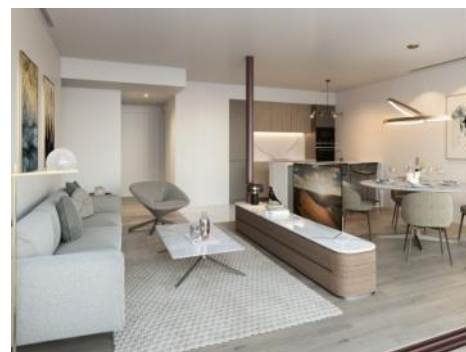
Objekt-Nr. 116533H



  
PORTA MALLORQUINA®  
Your home. Our passion.

Spectacular and luxurious new construction with terraces and pool in a sought after area of Palma

living space:	106 m <sup>2</sup>	Zwembad:	✓
Slaapkamers:	3	LABEL_ENERGIEKLA	in voorbereiding
Badkamer:	2	SSE:	
Terras/Balkon:	✓		
Uitzicht op zee:	-	<b>Prijs:</b>	<b>€ 1.399.000,-</b>



# Son Espanyolet

## Objekt-Nr. 116533H



### Objektbeschrijving:

This unique project is situated in an exclusive location between the districts of Santa Catalina and Son Espanyolet, and will surely make your dreams come true. Its 25 apartments offer ample living comfort due to their high-quality, carefully-chosen materials.

On the ground floor of the building are the communal areas offering diverse zones to relax in the sun including the pool, the garden and in the bright fitness centre.

There are 2 lifts and everything is designed practically and luxuriously. For every apartment there is a choice of 3 differing interior equipment-designs so that you can further personalise your own style. For example, there are porcelain stoneware or harz-wood floors, sanitary fittings of titan or stainless steel, and white or dark-coloured kitchens.

This aprox. 105,80 sqm, 4th-floor apartment has 3 bedrooms and 2 bathrooms, an open kitchen with utility room facing the living room, and an aprox. 8,89 sqm terrace - truly a very bright and pleasantly-designed property.

The underground car park of the building stretches over 2 levels and a parking space costs 39.900 €, with storage rooms available at extra cost.

# Son Espanyolet

## Objekt-Nr. 116533H



### Locatie en omgeving:

Son Espanyolet is a growing and charming area located right next to the trendy Santa Catalina district with the most diverse culinary offer of restaurants, bars and cafés that Palma has to offer. Despite its central location, Son Espanyolet is characterised by the quiet atmosphere you will find there. It is an ideal place to live away from the hustle and bustle of the big city, but still be surrounded by all kinds of amenities such as supermarkets, pharmacies, cafés, bars and restaurants. The Juaneda Private Hospital is also located in Son Espanyolet.

The famous Paseo Marítimo, the fantastic promenade that runs parallel to the coast of Palma and is ideal for walking, sports and enjoying restaurants and clubs, is also only a 7 minute walk away. With several schools nearby, this area is a popular choice for families. The area is a mixture of villas with gardens and low buildings. From many of the properties you can enjoy beautiful views of Bellver Castle, which is within walking distance and offers stunning views over the bay of Palma.

Early risers can enjoy the sunrise over Palma here.

Son Espanyolet  
Objekt-Nr. 116533H



All information is correct to the best of our knowledge. Errors and prior sale excepted. This prospectus is purely for information purposes. Only the notarized deed of sale is legally binding.

PORTA MALLORQUINA • C./ CONQUISTADOR 8, 07001 PALMA  
TEL. +34 971 698 242 • INFO@PORTAMALLORQUINA.COM