

Bonanova
Objekt-Nr. 116632F



Palma best location - Exclusive mediterranean luxury residential project with highest standard - 2 bedroom apartment with garden and pool

living space:	101 m ²	Zwembad:	✓
Slaapkamers:	2	LABEL_ENERGIEKLA	in voorbereiding
Badkamer:	2	SSE:	
Terras/Balkon:	✓		
Uitzicht op zee:	✓	Prijs:	€ 785.000,-



Bonanova

Objekt-Nr. 116632F



Objektbeschrijving:

Parallel East & West' presents itself with 2 innovative buildings, each with 6 luxury flats, which optionally have a private swimming pool, their own garden or a protected roof terrace with panoramic views over the bay of Palma, Cala Major and Illetas.

Architectural aesthetics, contemporary, respectful sustainability, highest energy efficiency as well as a harmonious embedding in the natural environment have been combined at an outstanding level in this special residential project.

The building ensemble is located between the polarities of "Panorama Palma Bay" and "Bellver Castle".

This oasis of peace on the first floor, offers you on a living area of 101 sqm, 2 bedrooms, one of them with bathroom en suite incl. dressing area, a bathroom, a utility room and a large kitchen and living area. The generous garden offers year-round outdoor living. The integrating terrace surrounds the living area. A sunbathing zone with swimming pool in the green area complete the oasis.

There is also a fully equipped air-conditioned fitness area.

Two garage spaces with storage room are included.

Orientation: E/W

The property is already under construction and is expected to be completed in 2022.

Bonanova
Objekt-Nr. 116632F



Locatie en omgeving:

Due to its elevated location, bordering with the wonderful Parc de Bellver with the famous Bellver castle, the beautiful area of Bonanova provides wonderful views over the whole of the bay of Palma, the open sea and the mountains.

This villa district, although centrally located and with superb connections to the centre of Palma by car or bus, is one of the quietest and most secure districts of Palma. It offers, therefore, the possibility to live in a peaceful area but still be able to easily enjoy all the facilities of the town with its restaurants, bars, cafes and shops.

In addition this neighbourhood itself offers exquisite gastronomy, supermarkets, sports locations and clinics, all close by. The shopping centre of Porto Pi, for example, is only a few minutes away by car and offers a huge choice of shops and restaurants. Lovely beaches such as that in Cala Major are also only a few minutes away by car. Bonanova, furthermore, is also ideal for children with the 'Queen's College' which enjoys an excellent reputation internationally.

Bonanova
Objekt-Nr. 116632F



All information is correct to the best of our knowledge. Errors and prior sale excepted. This prospectus is purely for information purposes. Only the notarized deed of sale is legally binding.

PORTA MALLORQUINA • C./ CONQUISTADOR 8, 07001 PALMA
TEL. +34 971 698 242 • INFO@PORTAMALLORQUINA.COM

Bonanova

Objekt-Nr. 116632F



VIVIENDA 0A
PLANTA BAJO
 SUPERFICIE CONSTRUIDA: 124,04 m²
 SUPERFICIE ÚTIL DEL SUELO: 117,00 m²
 PAREDES: 100 / 100 / 100 / 100

DESCRIPCIÓN	VALOR
Superficie construida	124,04 m ²
Superficie útil del suelo	117,00 m ²
Paredes	100 / 100 / 100 / 100

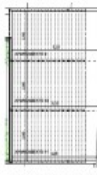


APARCAMENTOS Y TRASTEROS

PLANTA SÓTANO

- COCHERA 1
- COCHERA 2
- COCHERA 3
- COCHERA 4
- COCHERA 5
- COCHERA 6
- COCHERA 7
- COCHERA 8
- COCHERA 9
- COCHERA 10
- COCHERA 11
- COCHERA 12
- COCHERA 13
- COCHERA 14
- COCHERA 15
- COCHERA 16
- COCHERA 17
- COCHERA 18
- COCHERA 19
- COCHERA 20
- COCHERA 21
- COCHERA 22
- COCHERA 23
- COCHERA 24
- COCHERA 25
- COCHERA 26
- COCHERA 27
- COCHERA 28
- COCHERA 29
- COCHERA 30
- COCHERA 31
- COCHERA 32
- COCHERA 33
- COCHERA 34
- COCHERA 35
- COCHERA 36
- COCHERA 37
- COCHERA 38
- COCHERA 39
- COCHERA 40
- COCHERA 41
- COCHERA 42
- COCHERA 43
- COCHERA 44
- COCHERA 45
- COCHERA 46
- COCHERA 47
- COCHERA 48
- COCHERA 49
- COCHERA 50
- COCHERA 51
- COCHERA 52
- COCHERA 53
- COCHERA 54
- COCHERA 55
- COCHERA 56
- COCHERA 57
- COCHERA 58
- COCHERA 59
- COCHERA 60
- COCHERA 61
- COCHERA 62
- COCHERA 63
- COCHERA 64
- COCHERA 65
- COCHERA 66
- COCHERA 67
- COCHERA 68
- COCHERA 69
- COCHERA 70
- COCHERA 71
- COCHERA 72
- COCHERA 73
- COCHERA 74
- COCHERA 75
- COCHERA 76
- COCHERA 77
- COCHERA 78
- COCHERA 79
- COCHERA 80
- COCHERA 81
- COCHERA 82
- COCHERA 83
- COCHERA 84
- COCHERA 85
- COCHERA 86
- COCHERA 87
- COCHERA 88
- COCHERA 89
- COCHERA 90
- COCHERA 91
- COCHERA 92
- COCHERA 93
- COCHERA 94
- COCHERA 95
- COCHERA 96
- COCHERA 97
- COCHERA 98
- COCHERA 99
- COCHERA 100

Se garantiza el cumplimiento de las condiciones de venta. En caso de no cumplirse, el comprador podrá exigir la devolución del dinero pagado, más los intereses de mora correspondientes, y el vendedor se compromete a indemnizar al comprador por los daños y perjuicios ocasionados. El comprador se compromete a pagar el precio de venta en el plazo de 30 días hábiles desde la firma de este documento. El vendedor se compromete a entregar el inmueble en el plazo de 90 días hábiles desde la firma de este documento. El comprador se compromete a pagar el precio de venta en el plazo de 30 días hábiles desde la firma de este documento. El vendedor se compromete a entregar el inmueble en el plazo de 90 días hábiles desde la firma de este documento.

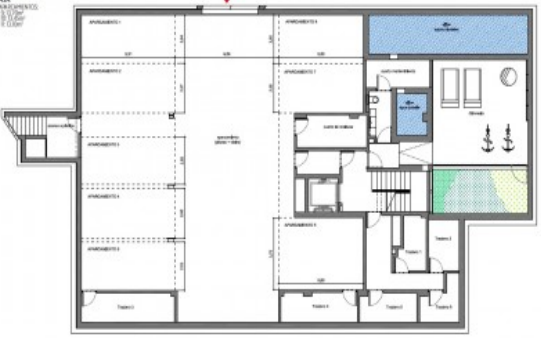


Plazas exteriores / Plazas bajo

APARCAMENTOS EXTERIORES

PLANTA BAJO

- COCHERA 1
- COCHERA 2
- COCHERA 3
- COCHERA 4
- COCHERA 5
- COCHERA 6
- COCHERA 7
- COCHERA 8
- COCHERA 9
- COCHERA 10
- COCHERA 11
- COCHERA 12
- COCHERA 13
- COCHERA 14
- COCHERA 15
- COCHERA 16
- COCHERA 17
- COCHERA 18
- COCHERA 19
- COCHERA 20
- COCHERA 21
- COCHERA 22
- COCHERA 23
- COCHERA 24
- COCHERA 25
- COCHERA 26
- COCHERA 27
- COCHERA 28
- COCHERA 29
- COCHERA 30
- COCHERA 31
- COCHERA 32
- COCHERA 33
- COCHERA 34
- COCHERA 35
- COCHERA 36
- COCHERA 37
- COCHERA 38
- COCHERA 39
- COCHERA 40
- COCHERA 41
- COCHERA 42
- COCHERA 43
- COCHERA 44
- COCHERA 45
- COCHERA 46
- COCHERA 47
- COCHERA 48
- COCHERA 49
- COCHERA 50
- COCHERA 51
- COCHERA 52
- COCHERA 53
- COCHERA 54
- COCHERA 55
- COCHERA 56
- COCHERA 57
- COCHERA 58
- COCHERA 59
- COCHERA 60
- COCHERA 61
- COCHERA 62
- COCHERA 63
- COCHERA 64
- COCHERA 65
- COCHERA 66
- COCHERA 67
- COCHERA 68
- COCHERA 69
- COCHERA 70
- COCHERA 71
- COCHERA 72
- COCHERA 73
- COCHERA 74
- COCHERA 75
- COCHERA 76
- COCHERA 77
- COCHERA 78
- COCHERA 79
- COCHERA 80
- COCHERA 81
- COCHERA 82
- COCHERA 83
- COCHERA 84
- COCHERA 85
- COCHERA 86
- COCHERA 87
- COCHERA 88
- COCHERA 89
- COCHERA 90
- COCHERA 91
- COCHERA 92
- COCHERA 93
- COCHERA 94
- COCHERA 95
- COCHERA 96
- COCHERA 97
- COCHERA 98
- COCHERA 99
- COCHERA 100



ESCALA 1/50



All information is correct to the best of our knowledge. Errors and prior sale excepted. This prospectus is purely for information purposes. Only the notarized deed of sale is legally binding.

Bonanova
Objekt-Nr. 116632F



All information is correct to the best of our knowledge. Errors and prior sale excepted. This prospectus is purely for information purposes. Only the notarized deed of sale is legally binding.