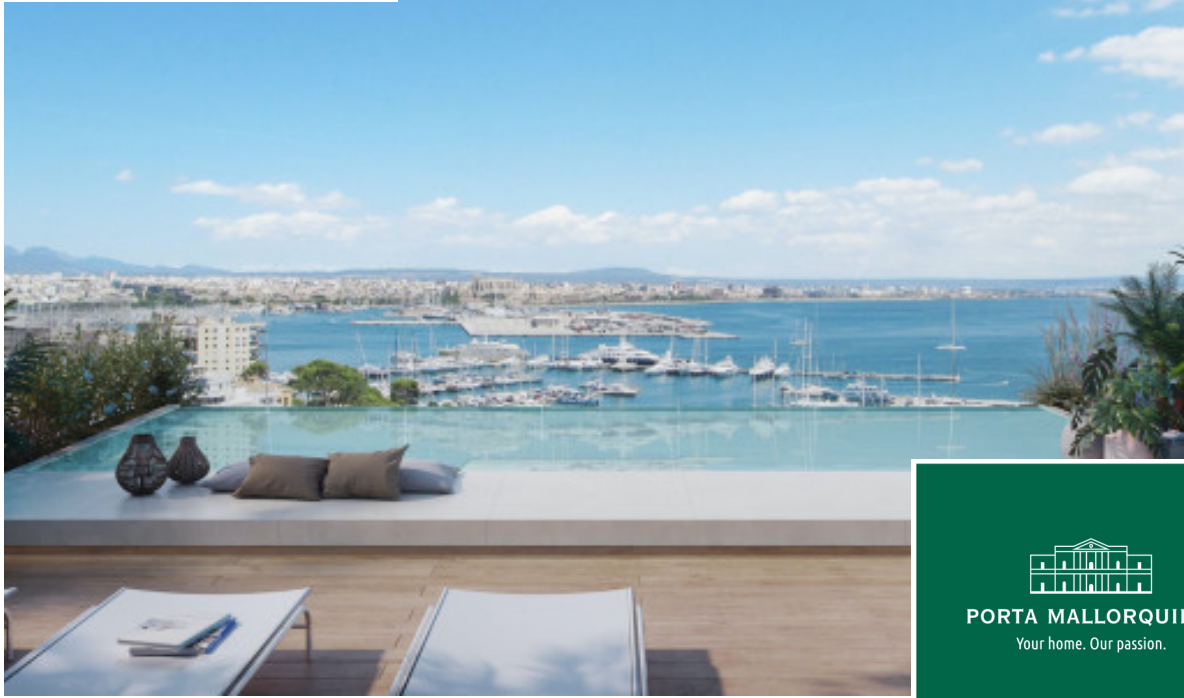


Bonanova
Objekt-Nr. 118017E



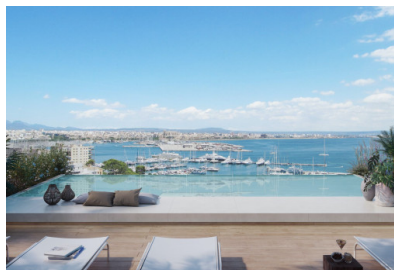

PORTA MALLORQUINA®
Your home. Our passion.

Newly built apartment with views of the bay of Palma

living space:	155 m ²	Zwembad:	✓
Slaapkamers:	3	LABEL_ENERGIEKLA	in voorbereiding
Badkamer:	2	SSE:	
Terras/Balkon:	✓		
Uitzicht op zee:	✓	Prijs:	€ 1.625.000,-



Bonanova
Objekt-Nr. 118017E



Objektbeschrijving:

The luxurious Cormorant Residences complex is being built in one of the most tranquil and select areas of Palma, with spectacular views of the Bay of Palma.

A total of 9 apartments have started construction in 2022 and are scheduled for completion in October 2023.

On the ground floor there is a common area of about 75 sqm for an elegant wellness area with solarium, gym and infinity pool. The access area to the building will be landscaped.

The apartment of 136 sqm plus 12 sqm of terrace has a bright living room with open kitchen and terrace with frontal sea view, laundry, toilet, 3 bedrooms and 2 bathrooms, one of them en suite and dressing room.

The price includes 2 indoor parking spaces and a storage room.

Remarkable equipment:

Large porcelain tile floors.

Underfloor heating.

Air conditioning.

Doors integrated into the architecture with floor to ceiling height with hidden frames. Hidden hinges and stainless steel handles.

Siemens or similar appliances, consisting of: Multi-function oven, induction hob, integratable microwave, integrated dishwasher, fridge/freezer,

induction hob, integratable microwave, integrated dishwasher, integrated refrigerator, integrated freezer, integrated

fridge, built-in freezer. Cooker bonnet

Integration of home automation through KNX system.

Motorized exterior blinds.

Exterior curtains on the residential terraces, with high performance fabric and stainless steel sliding roller.

Bonanova

Objekt-Nr. 118017E



Locatie en omgeving:

Due to its elevated location, bordering with the wonderful Parc de Bellver with the famous Bellver castle, the beautiful area of Bonanova provides wonderful views over the whole of the bay of Palma, the open sea and the mountains.

This villa district, although centrally located and with superb connections to the centre of Palma by car or bus, is one of the quietest and most secure districts of Palma. It offers, therefore, the possibility to live in a peaceful area but still be able to easily enjoy all the facilities of the town with its restaurants, bars, cafes and shops.

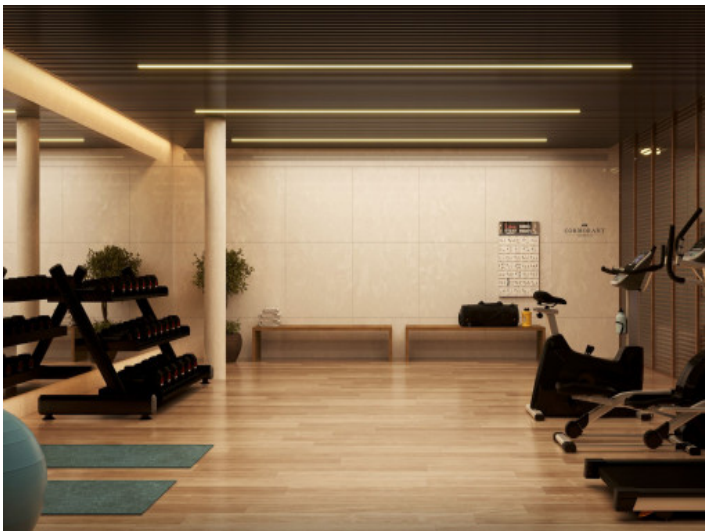
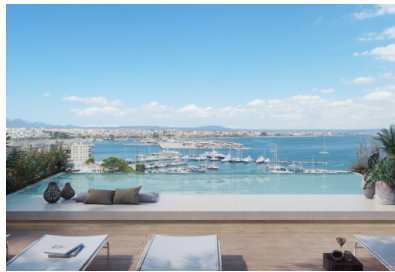
In addition this neighbourhood itself offers gastronomy, supermarkets, sports locations and clinics, all close by. The shopping centre of Porto Pi, for example, is only a few minutes away by car and offers a huge choice of shops and restaurants. Lovely beaches such as that in Cala Major are also only a few minutes away by car. Bonanova, furthermore, is also ideal for children with the 'Queen's College' which enjoys an excellent reputation internationally.

Bonanova
Objekt-Nr. 118017E

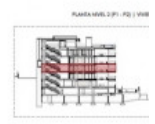


All information is correct to the best of our knowledge. Errors and prior sale excepted. This prospectus is purely for information purposes. Only the notarized deed of sale is legally binding.

Bonanova
Objekt-Nr. 118017E



Element	Area (m²)
Living Area	28.50
Bedroom	12.00
Bathroom	4.50
Kitchen	6.00
Terrace	10.00
Pool	1.00
Storage	2.00
Other	1.00
Total	65.00



All information is correct to the best of our knowledge. Errors and prior sale excepted. This prospectus is purely for information purposes. Only the notarized deed of sale is legally binding.