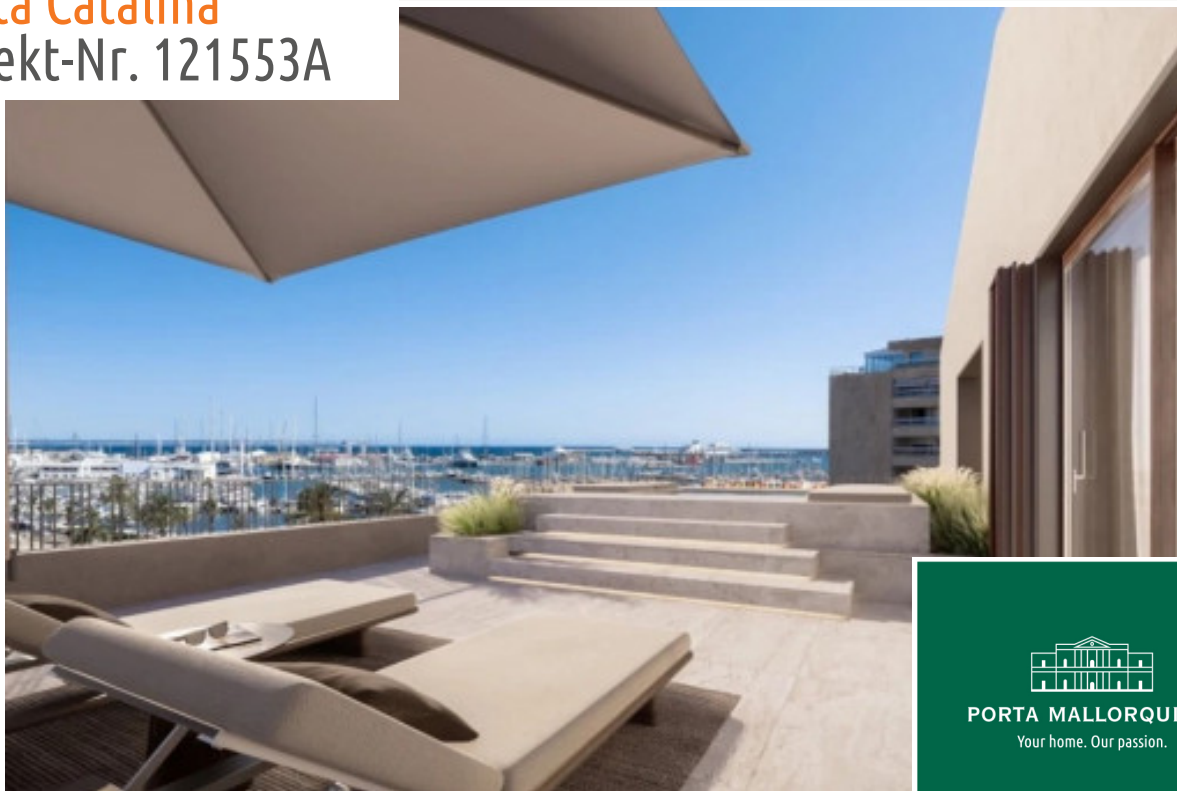


Santa Catalina
Objekt-Nr. 121553A




PORTA MALLORQUINA®
Your home. Our passion.

Exclusive penthouse with harbour views in a unique new development in Es Jonquet

living space: 85 m²

Slaapkamers: 2

Badkamer: 2

Terras/Balkon: ✓

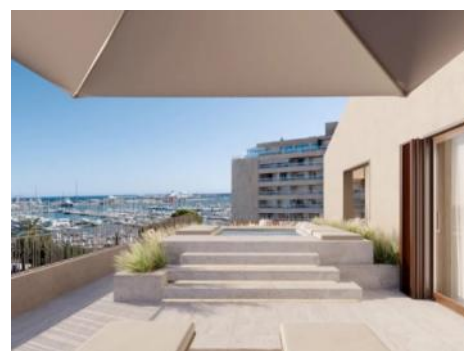
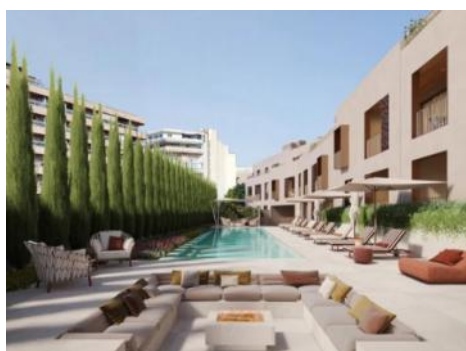
Uitzicht op zee: ✓

Zwembad: ✓

LABEL_ENERGIEKLA in voorbereiding

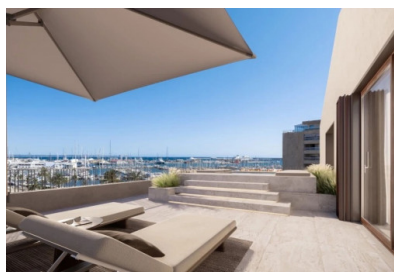
SSE:

Prijs: € 2.220.000,-



Santa Catalina

Objekt-Nr. 121553A



Objektbeschrijving:

This unique project consisting of 57 living units distributed over 3 residential buildings is presently under construction in El Jonquet, a hillside neighbourhood exuding the old-world charm of a former fishing village.

These exclusive residences offer incomparable living comfort for people seeking a special living experience. The excellent location is within easy walking distance of the port of Palma and the well-known bustling districts of the city.

This penthouse extends over a generously constructed area of approx. 85 sqm distributed over 2 bedrooms, 2 bathrooms, one of which is en suite, and an openly-designed living/dining area with fitted American kitchen. An absolute highlight is the terrace.

Offered are 2 exclusive furnishing lines of the highest quality to choose from, both of which will provide an incomparable living ambience. In addition customised upgrade-packages allow the apartments to be individually adapted to the requirements of the residents.

XO JONQUET - these park residences offer exceptional comfort and luxury with an impressive range of amenities. These include an exclusive spa and wellness area with indoor and outdoor pools, a fitness room, and a private cinema. A car wash, a golf simulator and a wine cellar complete this exceptional offer. In addition, in-house service and a community boat are available to offer residents an incomparable experience.

Santa Catalina

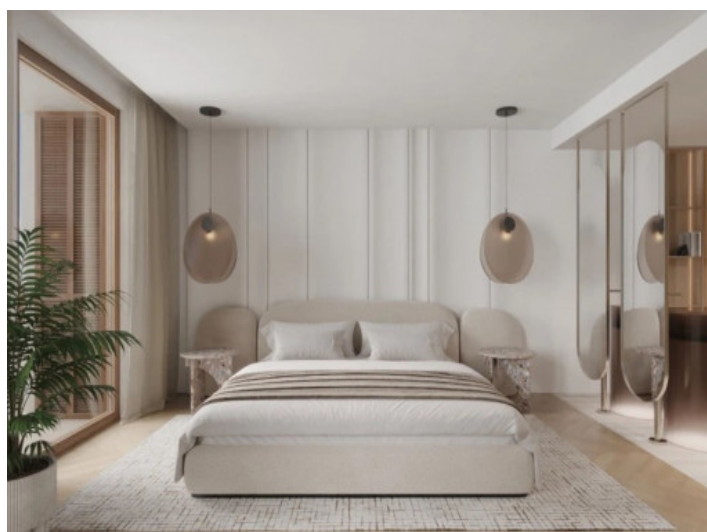
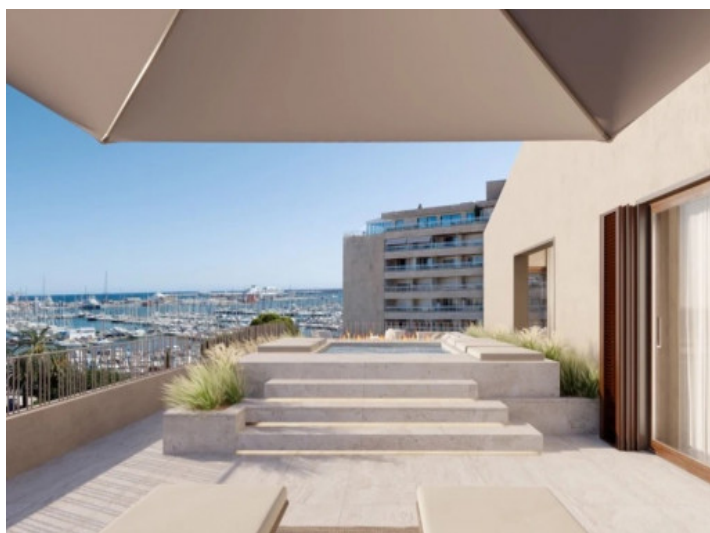
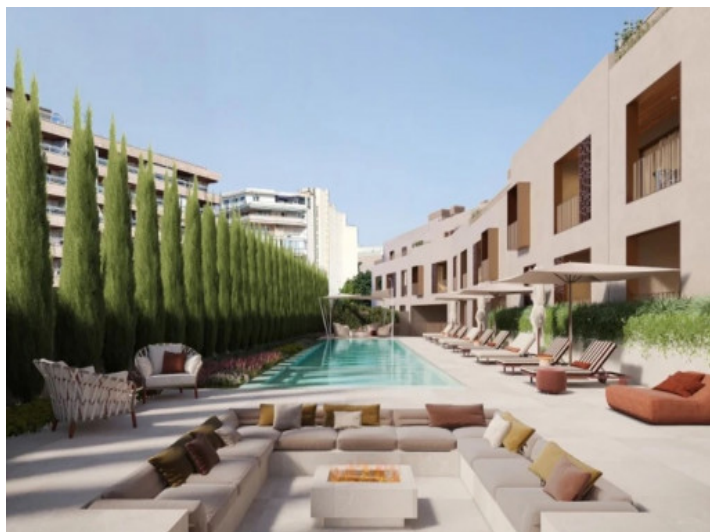
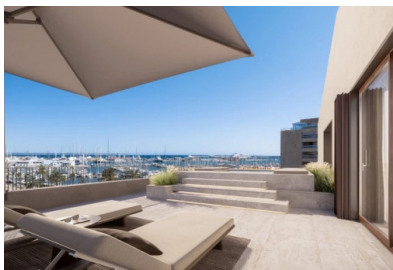
Objekt-Nr. 121553A



Locatie en omgeving:

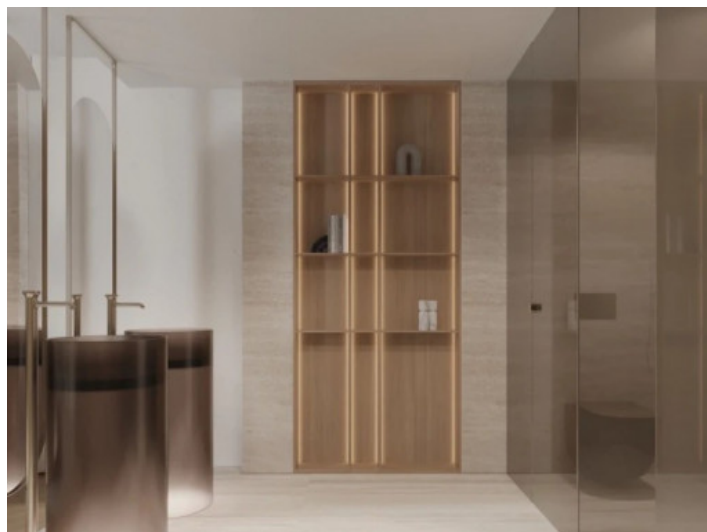
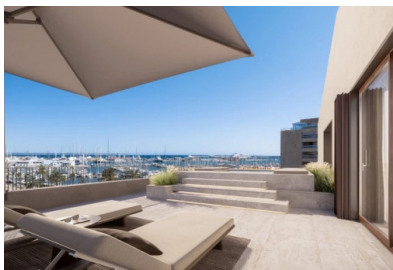
The Paseo Marítimo forms the borderline from the capital Palma towards the water and extends on about 6 kilometres from the military port of Porto Pi in the west, along the historic centre, the antique pier, the cathedral till the fisher harbour of Portixol in the east. Whilst some people take the bicycle or the roller blades, others are jogging or simply walk; all of them are enjoying meanwhile the fresh breeze on the waterfront. The promenade of Palma is one of the favoured meeting points for the people of the island and the life not only vibrates during the day. The attractive nightlife offers different kind of hip dancing clubs, fancy pubs, coffee shops and restaurants for each taste. Sunny residential apartment blocks, south orientated, with views to the marinas with its floating yachts, define the image of the Paseo Marítimo.

Santa Catalina
Objekt-Nr. 121553A



All information is correct to the best of our knowledge. Errors and prior sale excepted. This prospectus is purely for information purposes. Only the notarized deed of sale is legally binding.

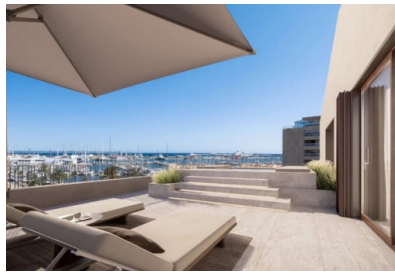
Santa Catalina
Objekt-Nr. 121553A



All information is correct to the best of our knowledge. Errors and prior sale excepted. This prospectus is purely for information purposes. Only the notarized deed of sale is legally binding.

PORTA MALLORQUINA • C./ CONQUISTADOR 8, 07001 PALMA
TEL. +34 971 698 242 • INFO@PORTAMALLORQUINA.COM

Santa Catalina
Objekt-Nr. 121553A



All information is correct to the best of our knowledge. Errors and prior sale excepted. This prospectus is purely for information purposes. Only the notarized deed of sale is legally binding.