

Binissalem
Objekt-Nr. 121501




PORTA MALLORQUINA®
Your home. Our passion.

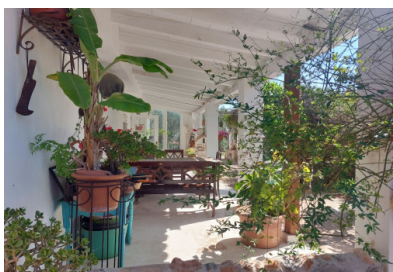
Charming finca in top location near Binissalem

living space:	220 m ²	Zwembad:	-
Perceel:	7.500 m ²	LABEL_ENERGIEKLA	in voorbereiding
Slaapkamers:	3	SSE:	
Badkamer:	1		
Uitzicht op zee:	-	Prijs:	€ 470.000,-



Binissalem

Objekt-Nr. 121501



Objektbeschrijving:

This enchanting finca captivates with its perfect combination of tranquility, nature, and excellent connectivity near the popular wine town of Binissalem. With a total construction area of approximately 220 sqm, including around 150 sqm of living space, this property offers ample room for your dreams.

The fully enclosed property spans a generous 7500 sqm and features a diverse array of flora, including numerous fruit trees, olive trees, cypresses, cacti, and various other Mediterranean plants. Enjoy sunny days and warm evenings on the various terraces, both open and covered. A dedicated area for a vegetable garden allows you to grow your own fresh produce. The traditional pizza oven invites you to enjoy convivial evenings with friends and family.

The single-story main house is a true gem and offers numerous design possibilities. Currently, it includes a kitchen, a cozy living-dining room with a fireplace, three spacious bedrooms, a bathroom, and a utility room. Additionally, there is a garage and various parking spaces on the property. A small, separate structure of approximately 7 sqm is ideal for use as a shed for your gardening tools.

A highlight of this finca is the rooftop terrace, which offers a magnificent view extending to the Tramuntana Mountains. All buildings are registered in the land registry.

Experience the perfect balance between rural tranquility and urban proximity – this finca is the ideal place for nature lovers and those seeking peace, yet not willing to sacrifice good connectivity. Let yourself be enchanted by the unique atmosphere and shape your new home according to your wishes. Do not hesitate to contact us for more information or a viewing. Your new paradise in Binissalem awaits you!

Binissalem

Objekt-Nr. 121501



Locatie en omgeving:

Binissalem received its name in the Moorish time, before King Jaume I conquered Majorca in 1229. It is situated picturesquely in front of the Tramuntana mountains and has approx. 5000 inhabitants. As in many other Majorcan villages you can see the church already from far. It is famous for its large wine-growing areas and a lovely red wine is exported to whole Europe. In autumn popular grape harvest festivals get celebrated.

Binissalem
Objekt-Nr. 121501



All information is correct to the best of our knowledge. Errors and prior sale excepted. This prospectus is purely for information purposes. Only the notarized deed of sale is legally binding.

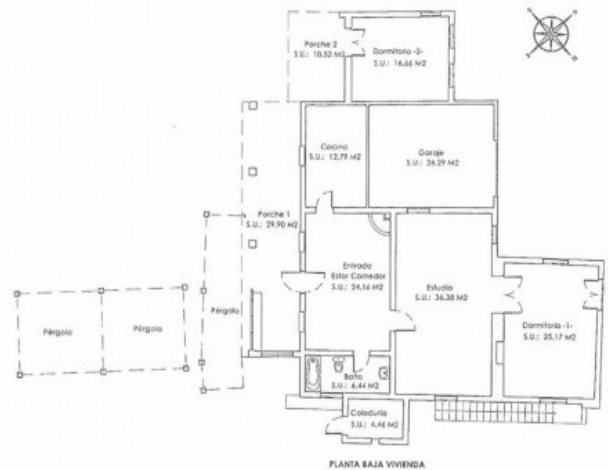
PORTA MALLORQUINA • C./ CONQUISTADOR 8, 07001 PALMA
TEL. +34 971 698 242 • INFO@PORTAMALLORQUINA.COM

Binissalem
Objekt-Nr. 121501



All information is correct to the best of our knowledge. Errors and prior sale excepted. This prospectus is purely for information purposes. Only the notarized deed of sale is legally binding.

Binissalem
Objekt-Nr. 121501



All information is correct to the best of our knowledge. Errors and prior sale excepted. This prospectus is purely for information purposes. Only the notarized deed of sale is legally binding.